

# THE PRACTICE-NAGPUR- INDIA

PRESENTATION ON ERP-SAP-  
CAPABILITY

# Agenda

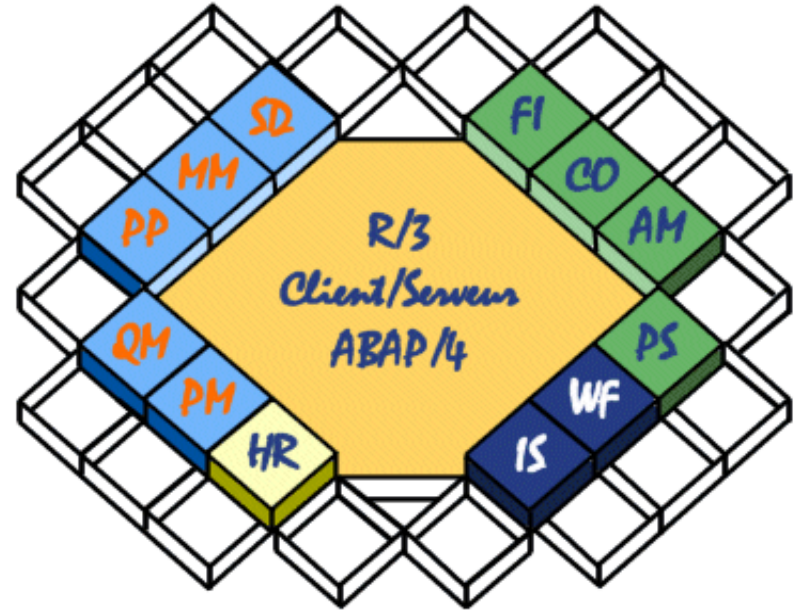
- **TPN Overview**
  - **Introduction**
  - **SAP offerings**
  - **Process**
  - **People**

# SAP Practice



# ERP-SAP-R/3-Implementation

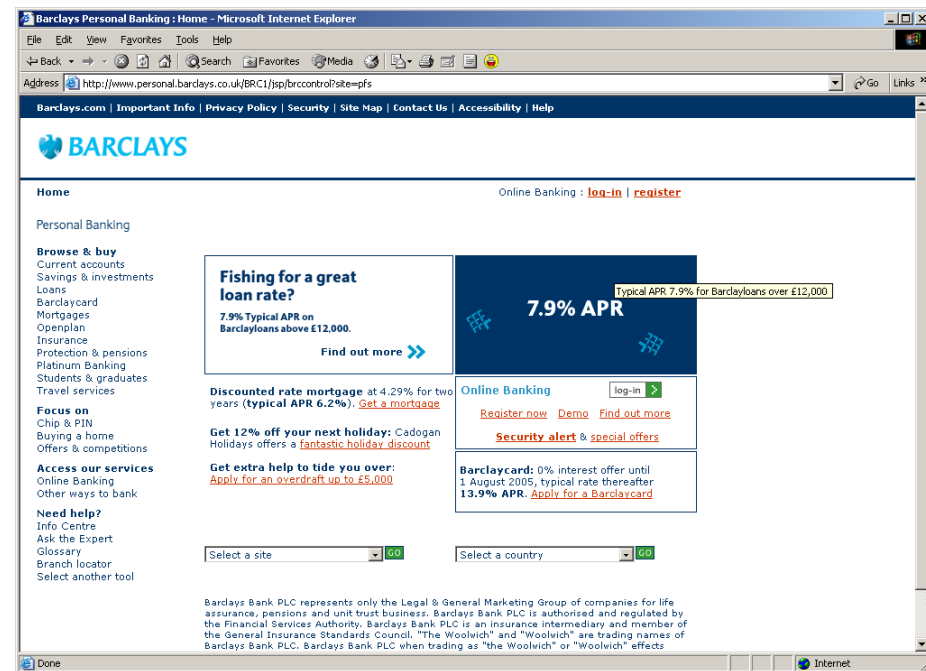
- Business Process Analysis and Definition
- Gap Analysis
- Project Management
- Conference Room Pilot (CRP) and Prototyping: for transaction validity as per business requirements
- Data Conversion and Migration
- Production Transition
- Rollouts and Parallel Run
- Product Training
- Post Implementation Audits:  
Review system set-ups and performance bottlenecks;  
optimizing performance;  
transaction purging and archiving



# Barclays Bank Case Study



- Offshore SAP Project for SAP-FI/MM and HR modules
- Team size 6 ABAP and one team leader in chennai and one project co-ordinator at uk
- Type of work-
  - enhancements
  - reports
- Methodology –through change request forms
- Project Duration – 6 months



# Consulting

- Strategic Consulting Services --  
To ensure that your IT infrastructure supports business goals
- Solution Delivery Services – To get software up and running quickly and cost-effectively
- Operations Services – To enable the solution to grow and adapt with your needs
- Life-Cycle Management Services -  
- Covers every phase of deploying and operating the solution



# System Audit Case Study – Brunei Shell

- SAP implementation done by Accenture
- Training on SAP Audit using SAP standard audit information systems
- Training conducted for senior SAP auditors from shell brunei-duration -5 days
- Auditing performed on existing implementation
  - Systems
  - Security
  - Process



# ***Process Audit Case Study- Navabharat Alloy***

- ✚ SAP implementation done by Intelligroup
- ✚ SAP Process Audit to establish that full features of sap
  - ✚ Gap analysis conducted
  - ✚ KPI's developed for
  - ✚ ROI established for sap investment
- ✚ Duration 3 Months
- ✚ Covered MM-SD-FI/CO modules





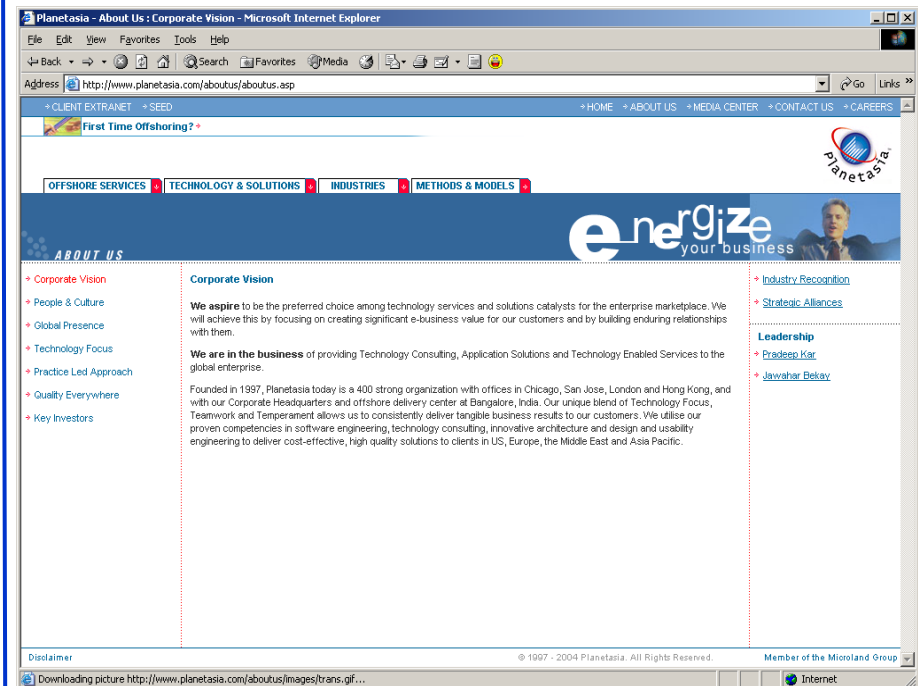
# Maintenance

- Disaster recovery
- Product sustenance and support
  - Code maintenance
  - Bug fixes
  - Patch releases
- Functional mentoring: Help Desk
- Infrastructure maintenance:
  - Database maintenance
  - NT/UNIX system administration
  - Enterprise application administration



# Maintenance Case Study - PlanetAsia

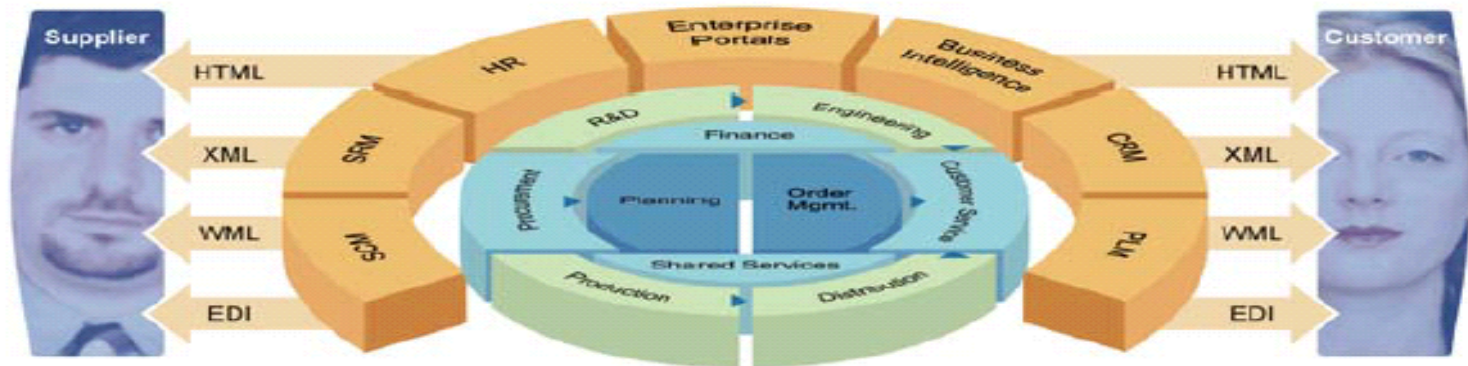
- Total no of sap users licenses – 100
- Type of support-full outsourcing of maintenance of sap installation
- Type of work
  - basis support
  - back up
  - fine tuning
  - Sap-functional support-SD/MM/FI/CO
  - Enhancements and new developments on sap for users



# SAP - Integration

## ERP focus of today

These solutions enable companies to integrate every step of their value chain seamlessly, from suppliers to consumers so they can meet customers' needs quickly and efficiently without raising costs or slowing growth.



### ERP is about:

- Inter-enterprise integration
- Foundation for collaboration
- Quick time to market

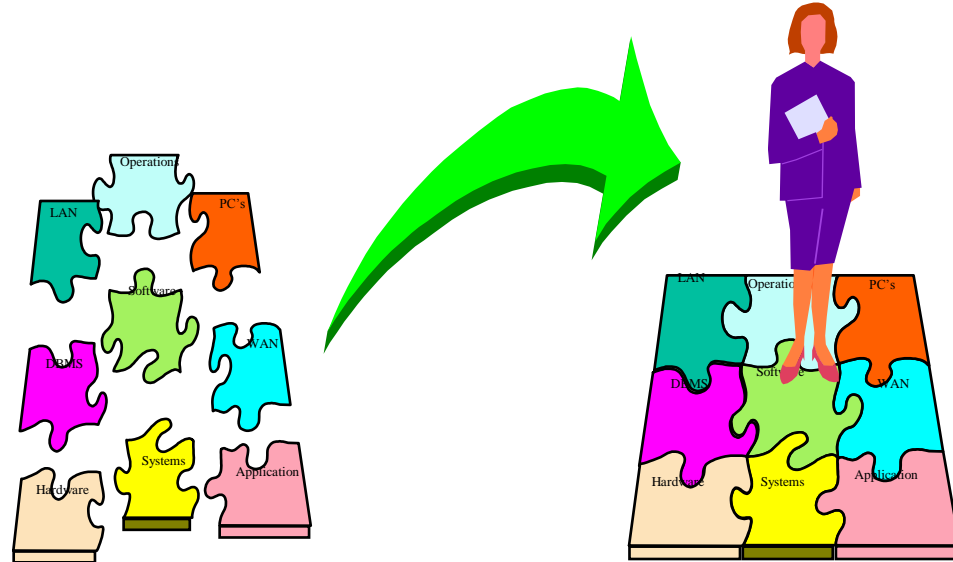
### New business target:

- Competitive advantage
- Supply chain effectiveness
- Customer care
- Revenue growth

Source

# Integration

- Identify different possible Integration solutions
- Select and implement appropriate architectures, tools and technologies
- Deploy a high impact integration solution



# Payment Card Integration

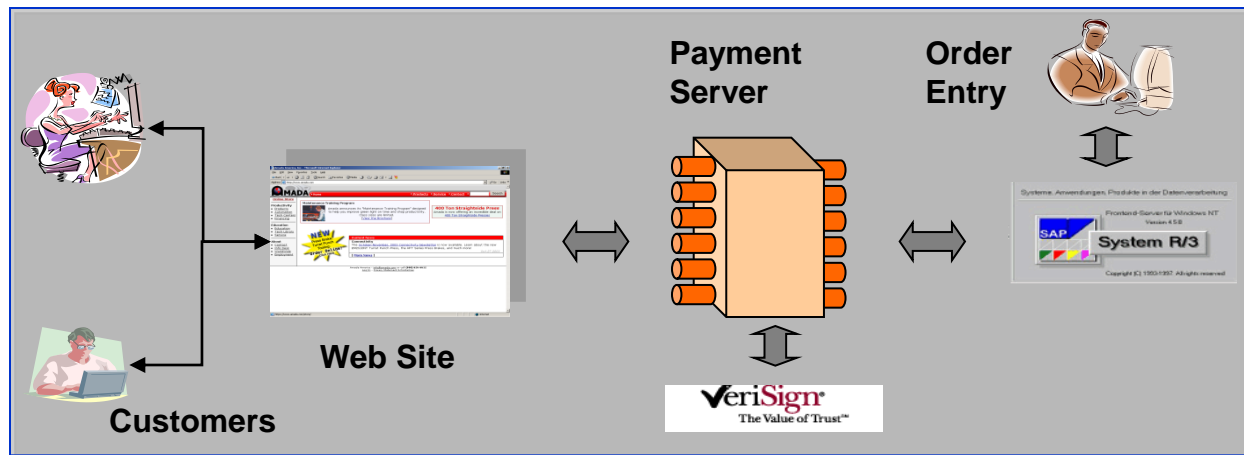


## • Client

- 2<sup>nd</sup> largest tools manufacturer in the world
- Implemented SAP a couple of years ago
- As a part of eBusiness initiative
  - Accept credit cards for purchases
  - Create shopping cart on the Web

## • Solution Components

- Developed a payment gateway that interfaces with SAP and Verisign
- Automatically invoked from SAP when saving a Sales Order
- Complete Business Process flow until settlement and reconciliation
- Developed SAP BAPI's as Web Services for invocation from the Web Portal



# Tools - Adapters JCA Architecture

Multiple resource adapters are plug gable into an application server

Enables application components deployed on the application server to access the underlying EIS systems

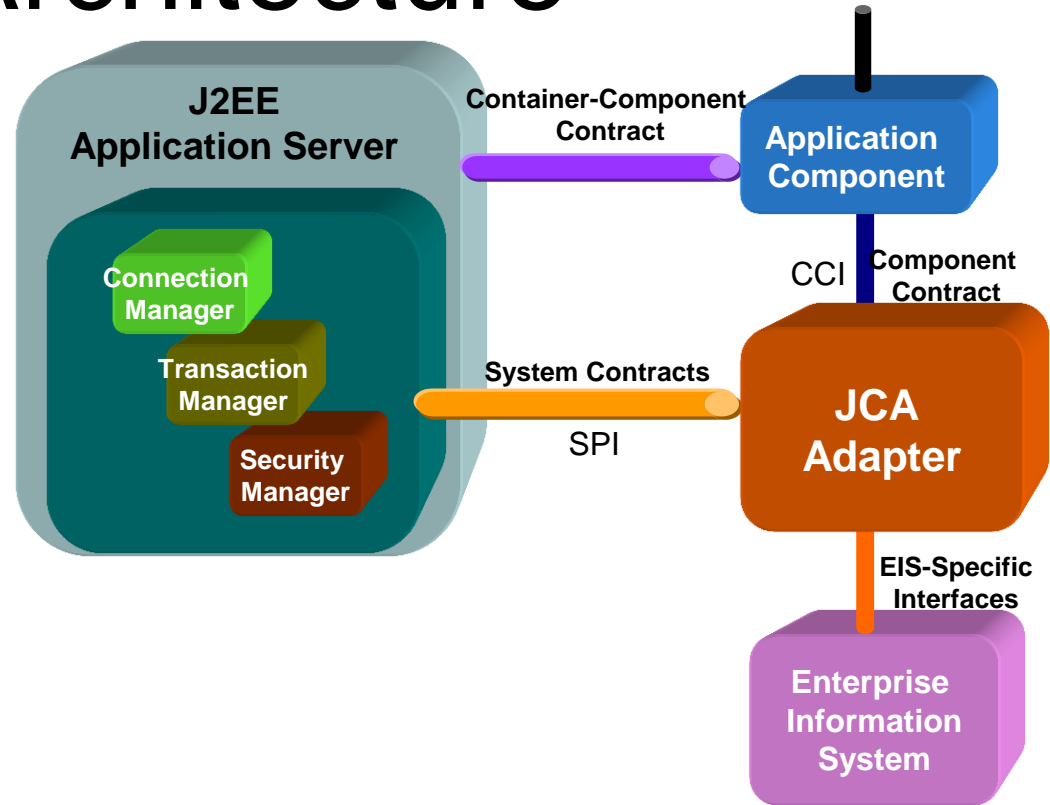
JCA defines client and system-level Java interfaces for implementing service adapters. Provides

- Security
- Transaction
- Connection Pooling

Adapter available for SAP and Lotus Notes

WIP for JDE

Porting to NetWeaver Adapter Framework



TPN is one of the first three Companies in the world to develop a SAP adapter based on JCA and first in India

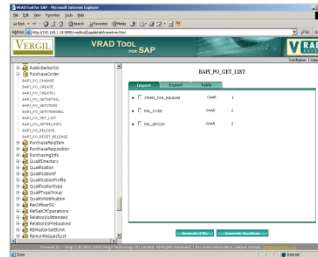
# VRAD Suite – Creating Web Services from Applications

- Significant productivity enhancement tool
  - Enables in creation of EIS code that can be deployed inside any application server through a few mouse clicks
  - Enables customisation too
- Custom XML can also be generated in case of a specified need.
- Extracts business context and Data from an EIS
- Generates ready-to-deploy
  - EJBs
  - JSPs
  - Deployment descriptors
  - Web Services
- Available for SAP

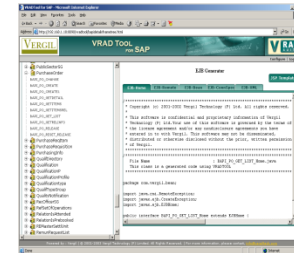




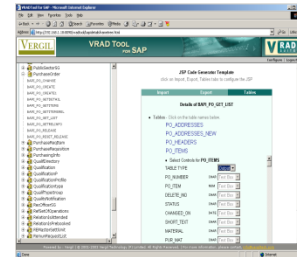
1. Connect to SAP instance



2. Choose parameters



3. Generate code



4. Configure JSP



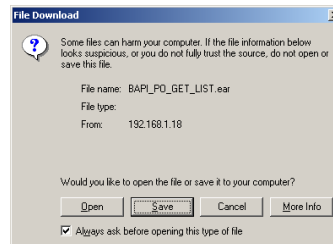
# 8 steps to create an Application

## Click to generate code

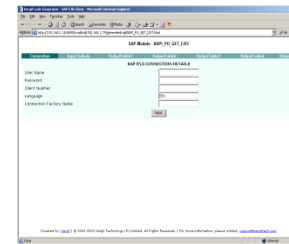
## Ready to deploy



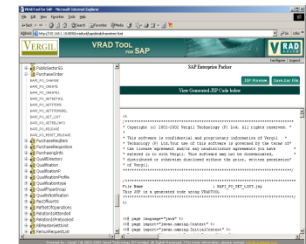
8. Deploy EAR



7. Save EAR



6. View JSP template



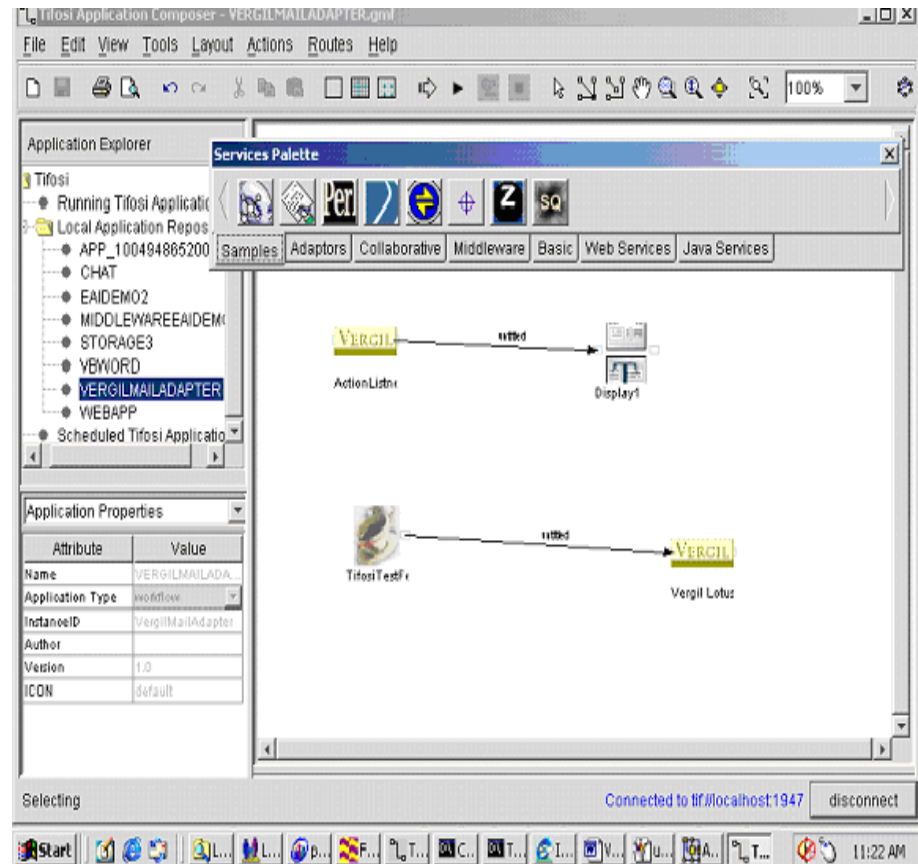
5. Generate JSP



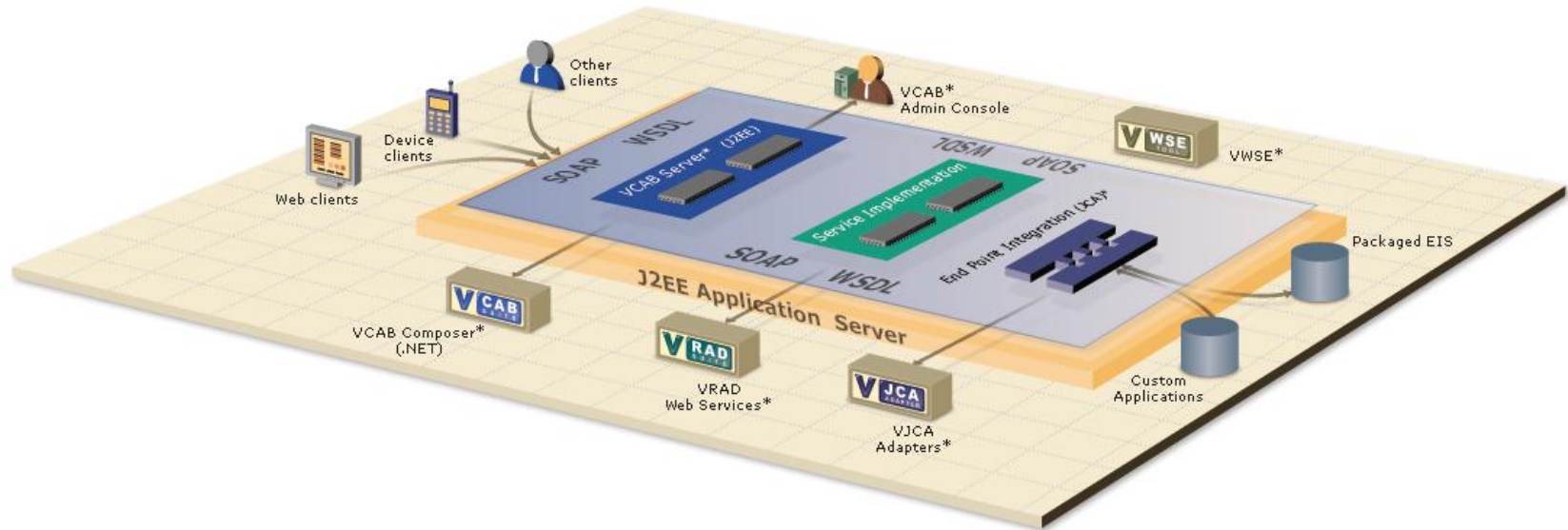
# A large Korean Manufacturing Company



- Business Scenario
  - User raises a Purchase Requisition in SAP R/3 system
  - Intimate to the manager by a Lotus mail
  - Mail contains the PR approval Lotus Form where in the manger can choose to update SAP by:
    - a) Approving PR
    - b) Rejecting PR
- Prototype to do the following
  - Connect and execute BAPI/RFC's in the backend system
  - Build Lotus Notes and SAP Adapter
  - Adapter to be deployed on TIFOSI platform
  - Invocation through Message Queue
- Design Challenges
  - JCA architecture relies on Application Server for management and has tight contract bindings
  - Pluggable into TIFOSI framework
  - Support Connection Pooling and Transaction Execution

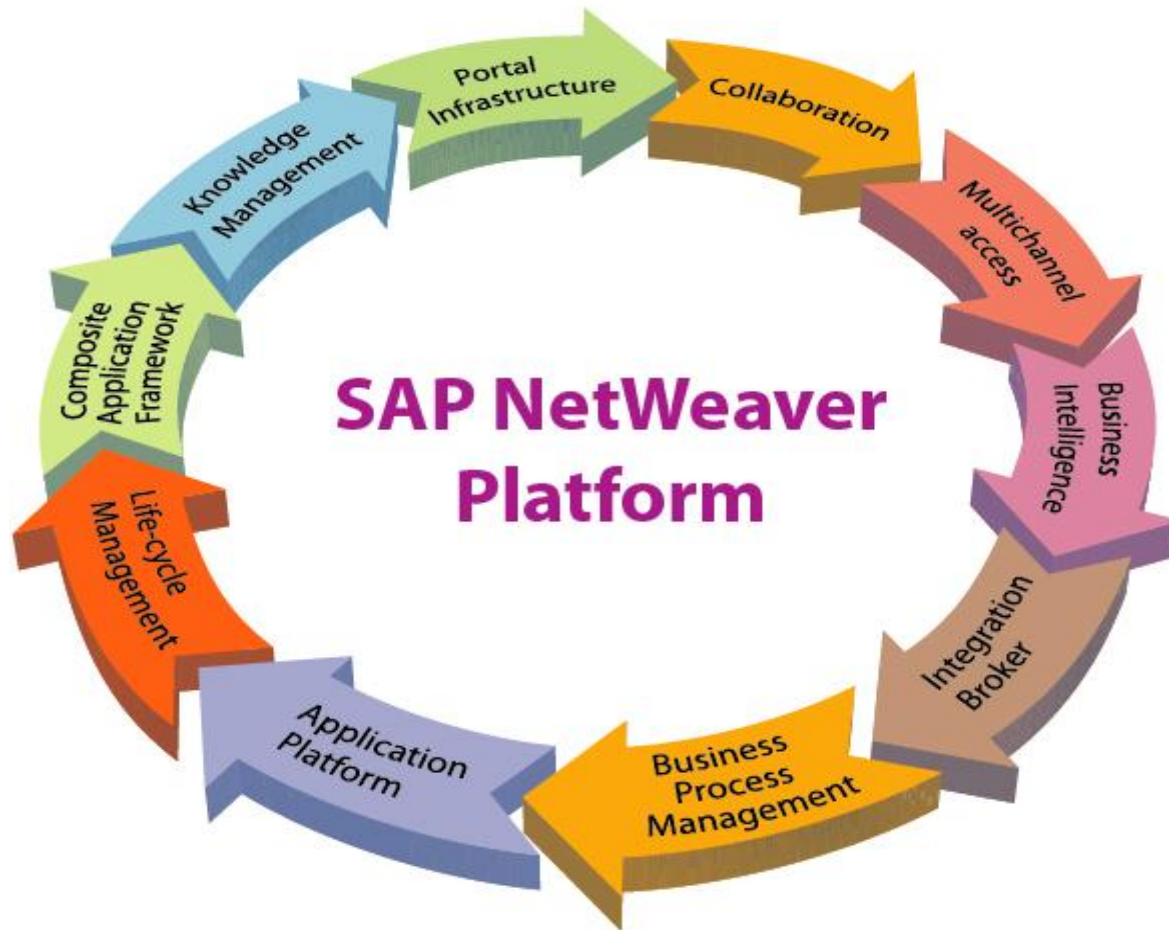


# TPN-Composite Application Framework



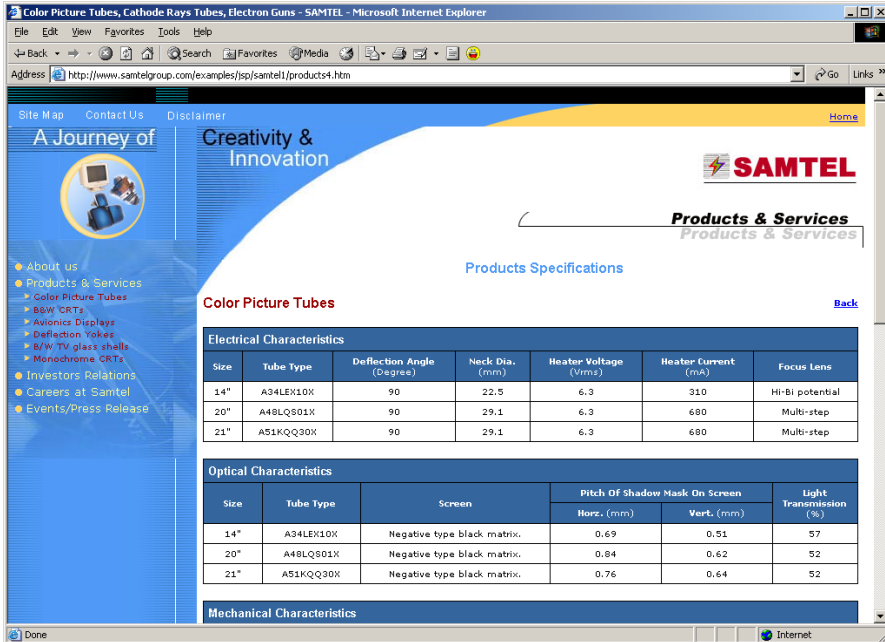
Framework for creating Composite Applications

# NetWeaver Components



# NetWeaver Case Study - Samtel

- TPN consultants were part of the team
- Client is a leading manufacturer of TV tubes
- Implemented
  - Business processes
  - Reports
- User Training



The screenshot shows the SAMTEL website in a Microsoft Internet Explorer browser window. The page title is "Color Picture Tubes, Cathode Rays Tubes, Electron Guns - SAMTEL". The address bar shows "http://www.samtelgroup.com/examples/sp/samtel/products4.htm". The website has a blue and yellow header with the SAMTEL logo and navigation links like "Home", "Products & Services", "Products Specifications", and "Back". A sidebar on the left contains a "A Journey of" section with icons and a list of links: "About us", "Products & Services", "Color Picture Tubes", "BSW CRTs", "Autosonic Displays", "Deflection Yokes", "B/W TV glass shells", "Monochrome CRTs", "Investors Relations", "Careers at Samtel", and "Events/Press Release". The main content area is titled "Creativity & Innovation" and "Color Picture Tubes". It features two tables: "Electrical Characteristics" and "Optical Characteristics".

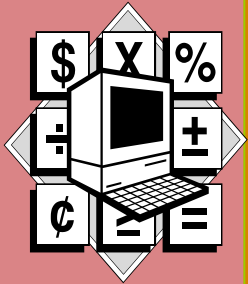
Size	Tube Type	Deflection Angle (Degree)	Neck Dia. (mm)	Heater Voltage (Vrms)	Heater Current (mA)	Focus Lens
14"	A34LEX10X	90	22.5	6.3	310	Hi-Bi potential
20"	A48LQ801X	90	29.1	6.3	680	Multi-step
21"	A51KQQ30X	90	29.1	6.3	680	Multi-step

Size	Tube Type	Screen	Pitch Of Shadow Mask On Screen		Light Transmission (%)
			Horz. (mm)	Vert. (mm)	
14"	A34LEX10X	Negative type black matrix.	0.69	0.51	57
20"	A48LQ801X	Negative type black matrix.	0.84	0.62	52
21"	A51KQQ30X	Negative type black matrix.	0.76	0.64	52

Below the tables, there is a section for "Mechanical Characteristics".

# Phase Deliverables

## Evaluation



Business  
Case and  
Project  
Proposal

## Project Preparation



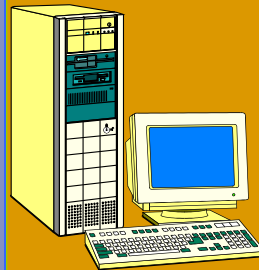
Project  
Charter

## Business Blueprint



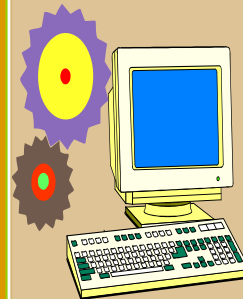
Business  
Blueprint

## Realization



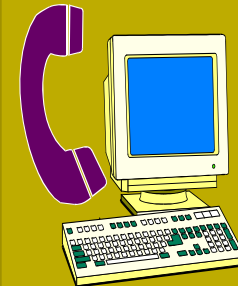
Configured  
and  
Tested  
System

## Final Preparation



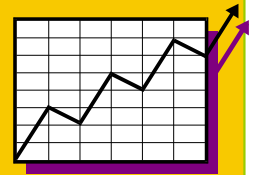
Production  
System  
and  
Ready  
Organization

## Go Live and Support



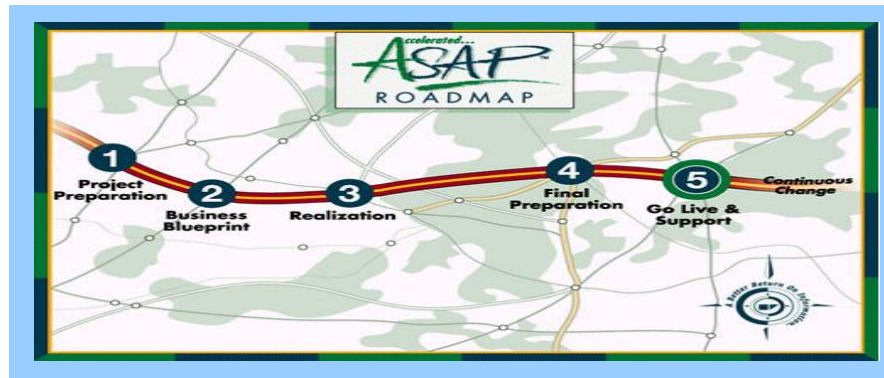
Help Desk  
and Support  
Organization

## Sustain



*Business  
Benefits  
and  
Continuous  
Improvement*

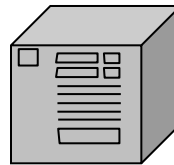
# SAP-Implementation-Methodology



## Methodology

- Q&A Database
- ASAP Roadmap
- Knowledge Corner
- BP Masterlist
- Accelerators

### PC Based Tools



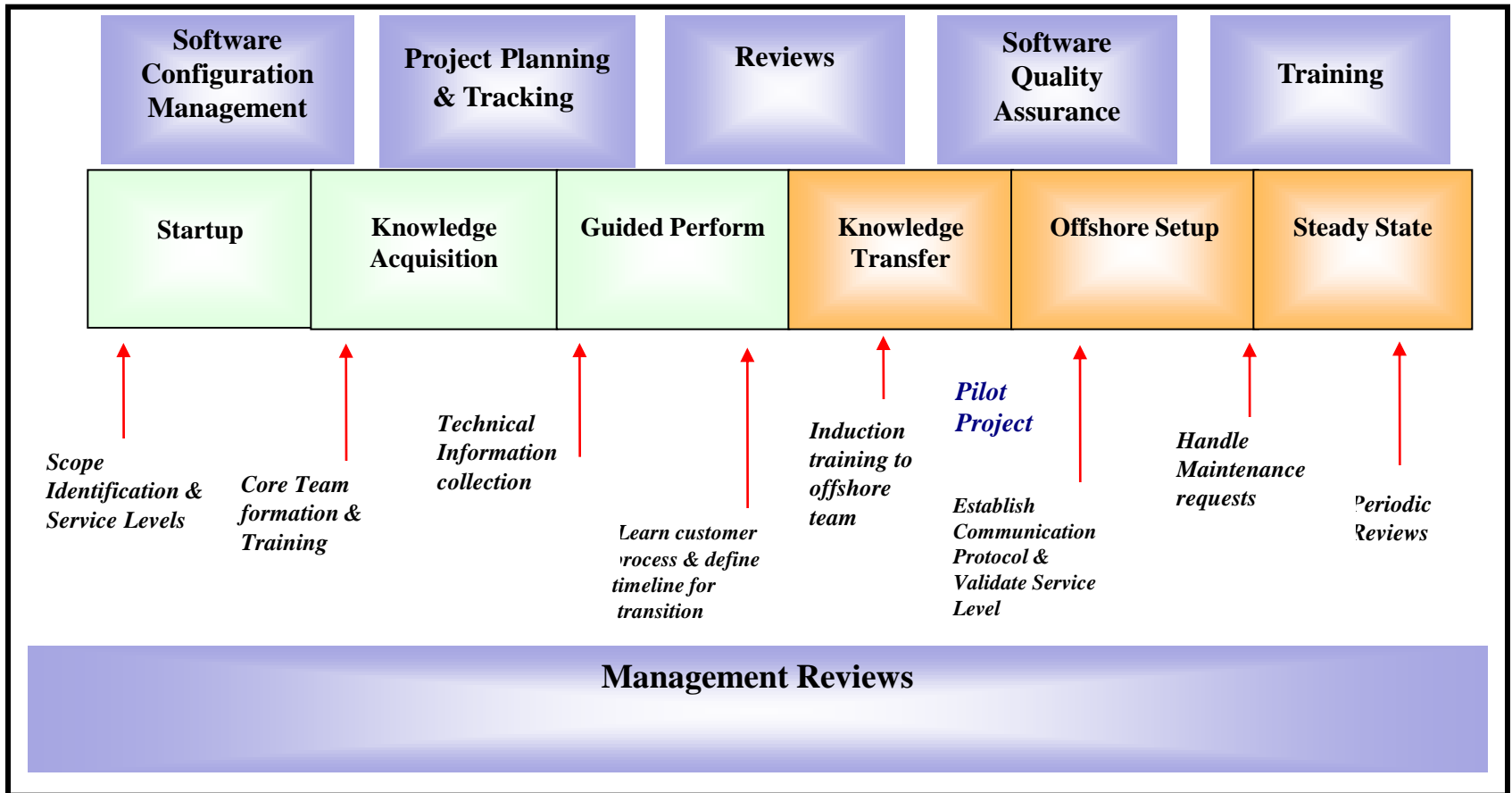
### R/3 Resident Tools

- Implementation Guide
- Reference Model
- Profile Generator
- Change Request Management

## Service

Training & Education, InfoDB, SAPNet  
OSS Support, Quality Assurance

# Onsite/Offshore Distribution



Processes relevant across the life of project

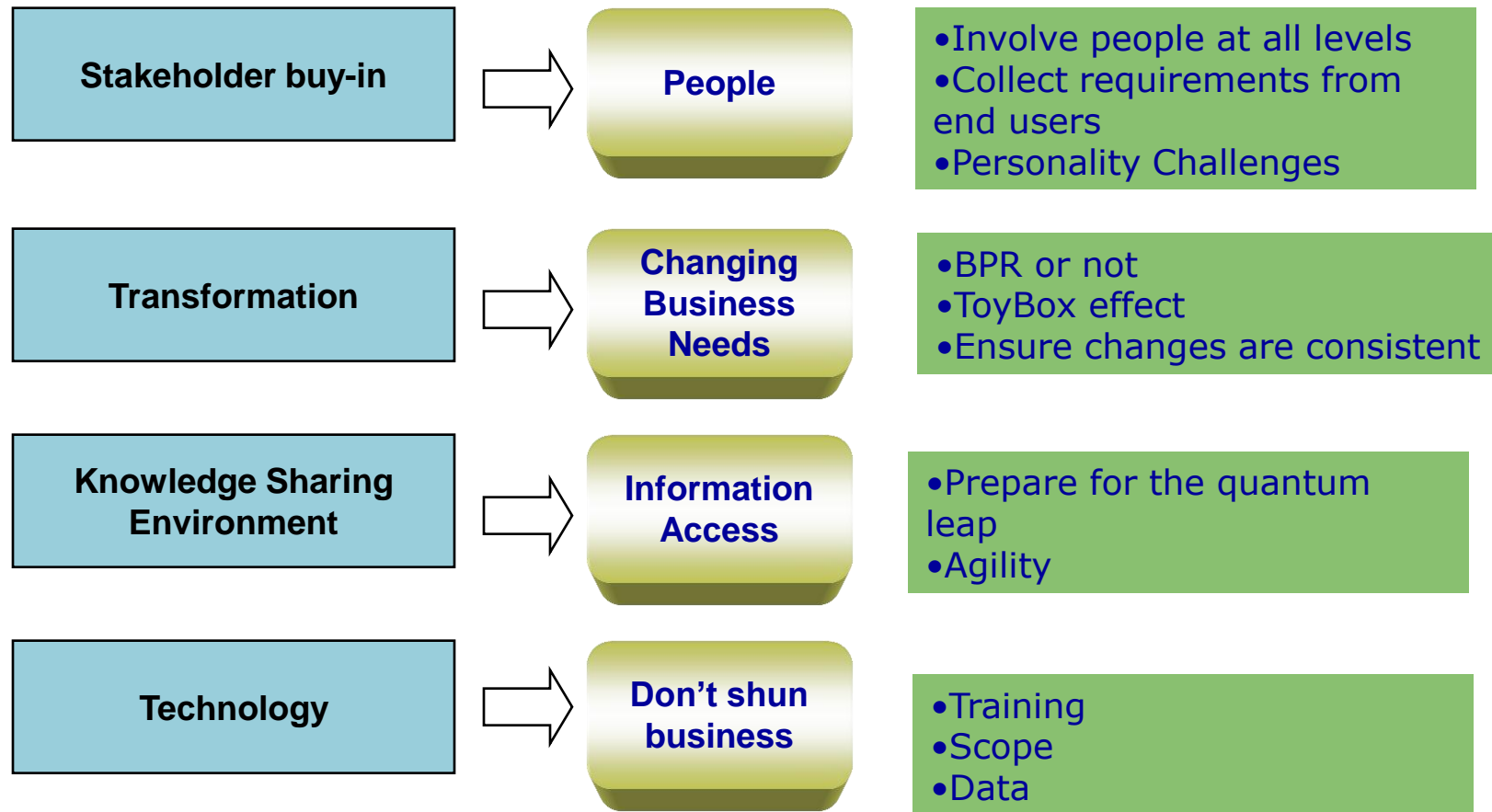
Legend: Onsite



Offshore

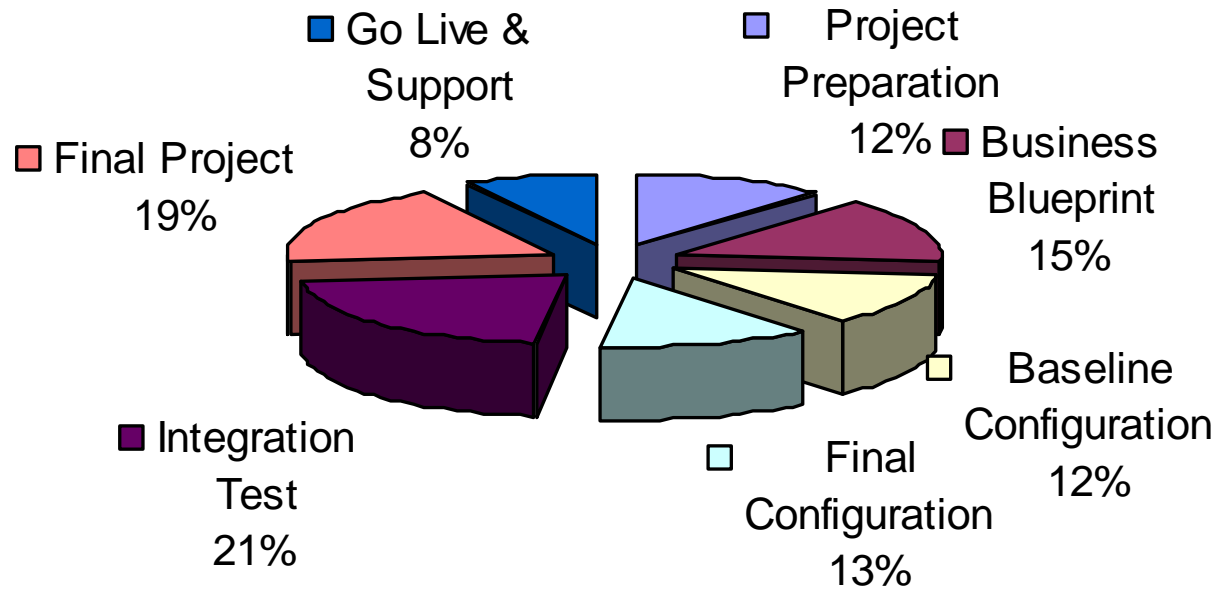


# Feedback – Learning's from our experiences

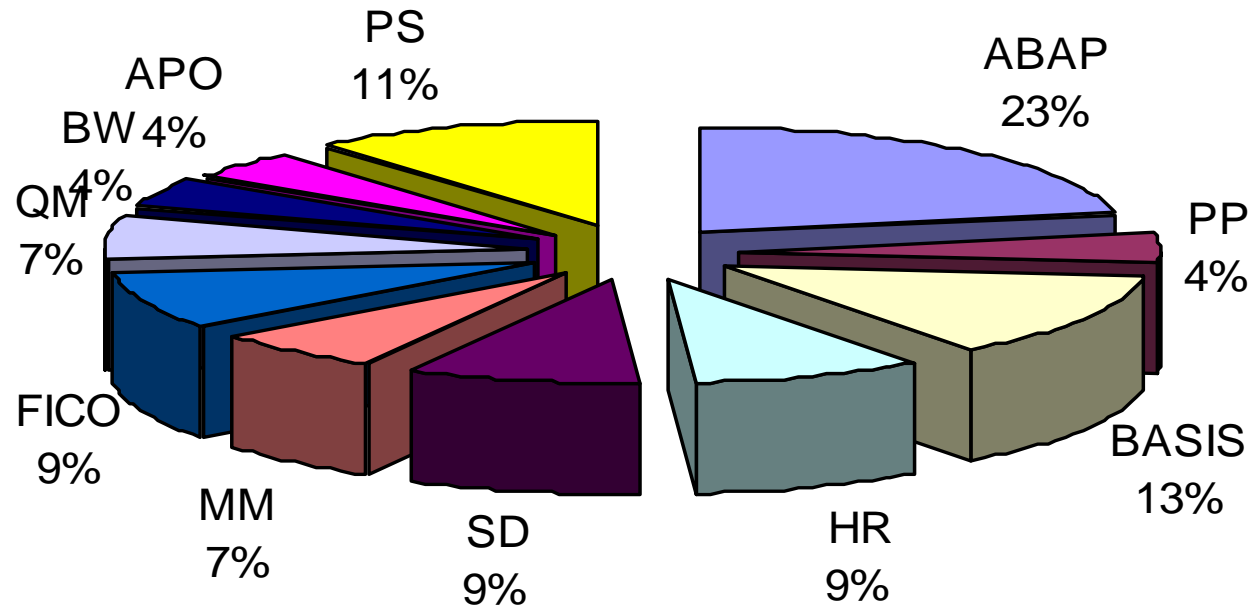




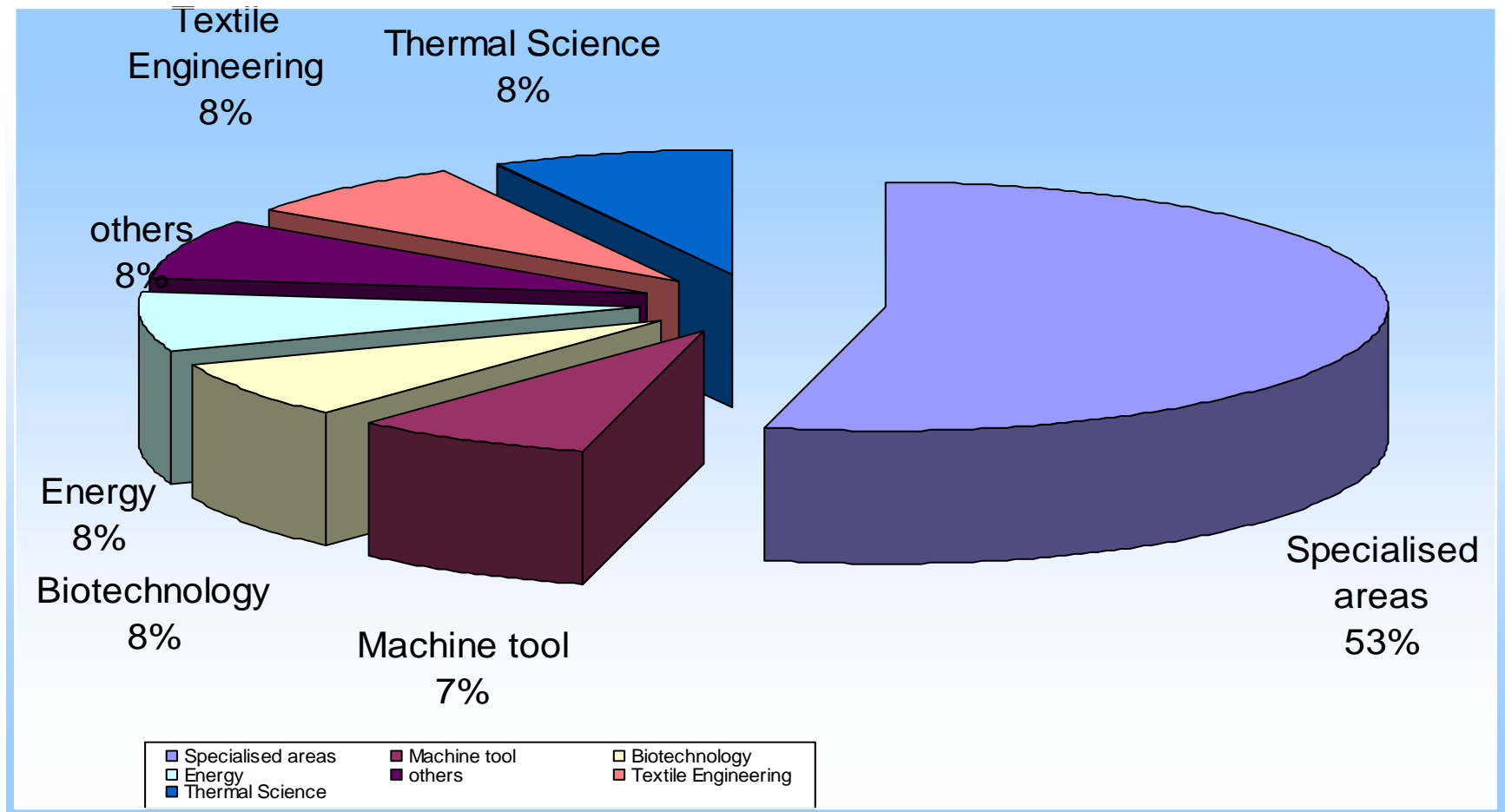
# Phases by Time



# Skills Distribution



# Functional Expertise



# **Key Assignments Executed by Our Team** **members**

- ***Brunei Shell Petroleum (Oil & Gas)-BRUNEI***
- ***Accenture, Brunei (Leading SAP Consulting firm)***
- ***Barclays Bank-UK***
- ***Amada Tools Corporation-U.S.A***
- ***Saint Gobain Glass India Ltd***
- ***Navbharat Ferro Alloys Ltd.***
- ***Punjab Dairy Ltd. (FMCG)***
- ***EXIDE BATTERIES LTD***
- ***Satyam Computer Services Ltd***
- ***Microland***
- ***Planet Asia***
- ***Jewel Brushes Pvt Ltd-Largest subcontractor for Uni Lever Group for tooth brushes***



# Summary

- TPN offshore team has significant expertise in SAP related projects
- TPN offshore team has successfully delivered projects from a offshore facility to global clients
- TPN competency goes beyond SAP and into integrating with other applications
- TPN has ready to deploy components/customizable that enhances developer productivity for SAP integration
- TPN has built Composite Application frameworks that can work with SAP NetWeaver platform